

# CASCADA

2018 Models Edition 2



VX\_CAS\_25966.tif



**VAUXHALL**

# LIVE IT UP

Making the most of the great British weather is all about being ready.

Packing anoraks as well as beach towels. Carrying warm socks with your sandals (just don't wear them at the same time).

But whatever the weather does (or doesn't), you can do more in the Cascada.

Because this full-size, four-seater convertible is just as stylish, comfy and capable with the roof up as it is down.

Its dual-layered soft-top electric roof drops in just 17 seconds\*, so your outdoor experience is just a click away.

It all makes Cascada not just a convertible for all seasons, but for every reason.

After all, don't the greatest things happen when you're ready for anything?

**Isn't life brilliant.**

\*At speeds up to 30mph.







# CONTENTS

---

Convertible heritage	6
Exterior design	10
The Cascada roof	12
Interior design	14
Chassis dynamics	16
Safety	18
Infotainment	24
Vauxhall OnStar	26
My Vauxhall	28
Practicality	30
Engines	32
Options	34
Cascada models	36
Wheels and tyres	42
Accessories	44
Colours	46
Trims	48

This brochure covers Cascada SE and Elite models only. Some of the models shown include options and accessories available at extra cost. And not all of the features described are available on every model. We may also offer alternative Cascada models such as Special Editions. So for all current model or equipment details visit the Vauxhall website: [vauxhall.co.uk](http://vauxhall.co.uk)

# THE GOLDEN AGE OF MOTORING...

---

100 years ago, during the golden age of the Grandes Routieres the Vauxhall 30-98 was known as 'the finest of sporting cars'.  
Not just for the brute force of its engine, but for the excellence of its engineering and the elegance of its styling.





# ...HAS RETURNED

---

A century after the 30-98 appeared, we've returned to that classic territory with our first full-size convertible since the 1930s. The Cascada has inherited the elegance of its open top predecessors, while modern design has provided it with the rigidity and driveability of a hard top. So you can appreciate an inspiring driving experience, rain or shine.









# DESIGN THAT INSPIRES

---

Purposeful and inviting, the Cascada's unmistakable profile is desirable from every angle. Whether it's out on the road or parked on your driveway, the elegant lines, sculpted body and familiar 'blade' styling give the Cascada its striking, expressive look – one that you won't forget any time soon.

VX\_CAS\_19928.tif





VX\_CAS\_25953.tif



VX\_CAS\_25954.tif



12 EXTERIOR DESIGN

VX\_CAS\_25955.tif

# OPEN UP TO A NEW WAY OF THINKING

---

When your convertible has the right kind of roof, there's no need to keep one eye on the weather forecast. On the most inclement of days the Cascada's dual-layered Black fabric roof will keep you warm and dry. It takes just 17 seconds to open and 19 seconds to close. You can even operate it on the move – at speeds of up to 30 miles per hour. Top up or top down you're free to enjoy all weather knowing that when the sunshine makes a comeback, the convertible experience is only moments away.

You can also choose an optional triple-layered acoustic fabric roof in Black or Malbec. With its multiple layers it won't just keep you warm it also provides additional soundproofing making motorway cruising as enjoyable as an open-top drive through the country.



# STYLE WITH PURPOSE

---

Developed with comfort and practicality in mind, the Cascada's interior is stylish and well-equipped. Soft-touch Morrocana dashboard, colour-contrasted seat piping and tailored stitching add a touch of luxury and panache. And technology plays its part too. Electronic front seatbelt presenters, standard on Elite models, automatically push the belts forward so you don't have to turn around. It's just another thoughtful touch that makes the Cascada ideal for everyday driving.





Cascada





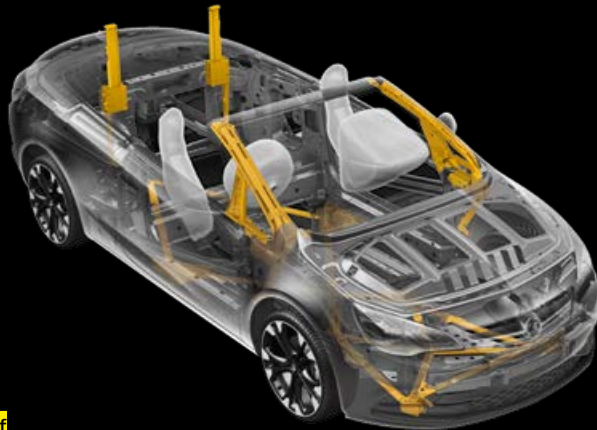
# A CAR WITHOUT COMPROMISE

Don't let the Cascada's looks distract you from what really matters. This four-seat convertible is a real driver's car. Choose turbo power from multi-valve petrol or diesel engines with up to 200PS available from the 1.6i Direct Injection petrol unit. And thanks to its outstandingly rigid sports chassis and HiPerStrut front suspension, the soft top doesn't cost you an ounce of dynamism or driveability.

The Cascada has been engineered to combine the broad stance and elegant lines of a luxury cabriolet with the cornering, control and responsiveness of a hard top. Plus the optional FlexRide system will deliver an even sharper response and greater precision during cornering and provide you with a more relaxed ride for long-distance cruising. So you can enjoy an exciting driving experience, rain or shine.

# SAFETY FIRST. SECOND. AND THIRD

Safety is a number one priority in every car, which is why every Cascada benefits from a reassuring array of safety technology. Front and side airbags, reinforced steel windscreen pillars and the pop-up roll-over bar system are designed to help keep you safe should the unthinkable happen.



1

2





VX\_CAS\_25971.tif

**1. Reinforced chassis and safety cage.**

A substantially reinforced chassis improves stability, while reinforced tubular-steel pillars give the front section extra rigidity. Combined with the Cascada's high-strength, steel passenger safety cell, these features enhance the overall safety of the car and improve steering response.

**2. Comprehensive roll-over protection.**

One of the most important safety features in the Cascada is one you're extremely unlikely to ever see: the steel roll-over bars and safety cage behind the rear seats. If the car should roll over, the bars react instantaneously, accelerating upwards to help protect you and your passengers from the impact.

**Active-safety front seat head restraints.**

In addition to the roll-over bars, the Cascada also comes with active head restraints that automatically move forward and upwards to help minimise the risk of whiplash injury and guard against other head and upper body injuries.

# HEADLIGHTS WITH FORESIGHT

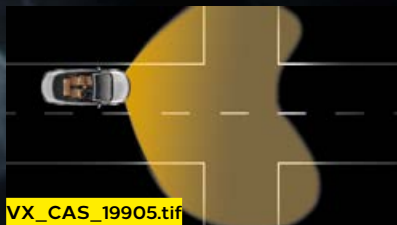
---

The Cascada can be equipped with the very latest Bi-Xenon Adaptive Forward Lighting Plus (AFL+) headlight system as an option. This uses a front-mounted camera, rain sensor and steering angle input to improve visibility and safety by automatically adjusting the strength of your headlights to suit different speeds, manoeuvres, weather conditions and traffic situations. Optional at extra cost on Elite models only.

**LED daytime running lights.** Part of the optional Premium Forward Lighting Pack, the intelligent AFL+ headlight system comes with energy-efficient LEDs that make your car more visible to other road users.

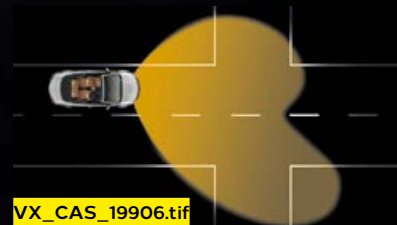


VX\_CAS\_19721.tif



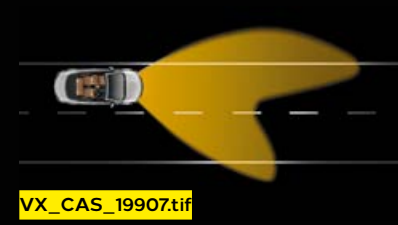
VX\_CAS\_19905.tif

**Pedestrian area light.** Illuminates potential hazards with a wider spread of light – an extra eight degrees left and right (up to 20mph).



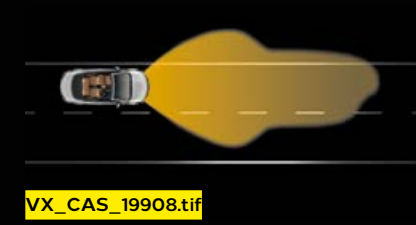
VX\_CAS\_19906.tif

**Town light.** Spreads the beam of light wider and lower. Activated by vehicle speed together with street lighting (20-35mph).



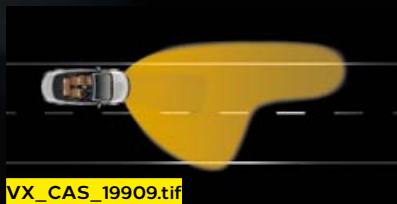
VX\_CAS\_19907.tif

**Country road light.** Wider spread and brighter light than normal low beam. 70-metre range, without dazzle (35-70mph).



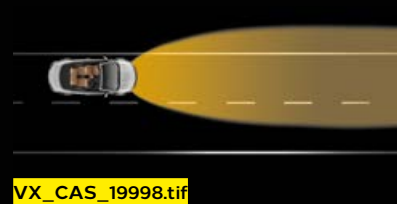
VX\_CAS\_19908.tif

**Motorway light.** 140-metre range, higher and brighter than normal low beam, without dazzle (over 60mph).



VX\_CAS\_19909.tif

**Adverse weather light.** Wiper or rain sensor activated for better vision in bad weather conditions (up to 45mph).



VX\_CAS\_19998.tif

**High beam assist.** Automatically switches from high to low beam as it detects vehicles ahead or oncoming. In addition, high beam boosts the range and brightness of your headlights by up to 15% (over 25mph).



VX\_CAS\_19910.tif

**Dynamic curve light.** Activated by steering angle and speed, the headlights swivel up to 15 degrees into the bend (any speed).



VX\_CAS\_19911.tif

**Static cornering light.** Spreads light 90 degrees to the left or right to help you see better around corners (up to 25mph, also when reversing).

# NOTHING LEFT TO CHANCE

By introducing a range of state-of-the-art electronic driver aids we've made driving the Cascada easier and safer. The innovative front camera system reads the road and informs you about what's ahead.



VX\_CAS\_25498.tif

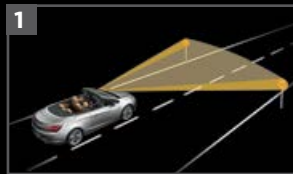
**1. Traffic Sign Recognition.** This clever feature makes sure you're constantly made aware of speed limits, even temporary ones. It continually monitors road signs, and gives you a warning if you unintentionally stray over the limit. It can even read and display motorway electronic signs related to speed limits like rain or snow warnings.

**2. Lane Departure Warning.** This system uses the front camera system to recognise lane marking lines. If the vehicle leaves its lane without you signalling, an audible warning sound is given. This helps prevent potential accidents and makes you aware of your concentration levels or tiredness.

**3. Following Distance Indication (FDI) and Forward Collision Alert (FCA).** FDI constantly shows the distance to the leading vehicle on the instrument

panel, helping you to maintain a safe distance. In addition, FCA (active at speeds above 25mph) warns you visually and audibly if you approach a slower-moving vehicle too quickly. It will then use Automatic Brake Intervention technology to apply the brakes, slowing the car to as little as 10mph if required. All three of these features are available as part of the Driver Assistance Pack, optional at extra cost on Elite models only.

**4. Side Blind Spot Alert.** The system helps prevent a potential collision with a vehicle in the lane either side of the car by continuously monitoring both blind spots. If a vehicle enters one of those blind spots, a warning light flashes in the relevant door mirror. Available as part of the optional Perimeter Protection Pack.



VX\_CAS\_19913.tif



VX\_CAS\_19914.tif



VX\_CAS\_19912.tif



VX\_CAS\_19915.tif

# IMPROVE YOUR DRIVETIME

Roof up or roof down, an audio system with seven premium speakers and digital radio fills the Cascada with sound. And with USB connectivity and Bluetooth® together with the availability of satellite navigation systems you're guaranteed to be kept informed and up to date while on the move.

**CD 600 IntelliLink.** Standard on both models, the CD 600 IntelliLink system features digital radio with 20 watts per channel output and seven speakers. By seamlessly integrating your smartphone with IntelliLink technology and displaying the most important functions on the 7-inch colour display, the audio unit sets new standards for comfort, connectivity and safety. Make calls, audiostream your music via Bluetooth® or with Gracenote® file management via USB, listen to incoming SMS or view pictures uploaded via USB – your hands always stay on the steering wheel with integrated controls.

**SMS readout.** For increased safety, incoming SMS are delivered vocally when under way with the possibility to call back or send a predefined message. They are also shown in the display, but only when the car is stationary.

1





**Plug-and-play USB and Bluetooth® technology.**

A USB interface lets you hook up most MP3 players, smartphones or USB sticks to your Cascada's infotainment system and access music, podcasts and other files via the steering wheel remote controls. And with Bluetooth® technology you get hands-free operation of most mobile phones. Standard on both models.

**Navi 650 satellite navigation system.** Featuring the very latest in satellite navigation with 7-inch colour screen. This optional system gives you fast access to map data and points of interest to keep you informed and on the move and can even show you the fastest, shortest or the most economical route. Covering all major link roads and streets in towns and cities across mainland Britain and Ireland.

- 1. Navi 950 IntelliLink.** Upgrade to this optional system and you'll not only get street level mapping across Europe, you'll be able to make calls and stream audio from your smartphone, tablet or other portable device using Bluetooth®. It features voice commands for navigation and phone calls. It can also display your texts or even read out incoming messages. So you stay connected every minute of your journey.
- 2. Steering wheel mounted audio controls.** Control all the in-car infotainment systems and keep your hands where you need them. These controls let you adjust the volume and skip tracks and radio stations.





# THIS COULD BE THE IDEAL TRAVEL COMPANION

Journeys go faster with great company. It's just a good feeling to have someone with you along the way.

Which is why your Cascada\* comes with Vauxhall OnStar<sup>1</sup>, a personal connectivity and service assistant who's always there for you, 24/7, 365 days a year.

At the push of a button, it puts you in touch with someone to help you – could be help to find or unlock your car or immediate help in an emergency – whatever happens, it's there.

Oh yes, and how could we forget it also has a super-handy 4G Wi-Fi Hotspot<sup>2</sup>. Perfect for hooking up to seven devices (I want to be at that party).

Isn't this just the kind of mate you'd like on your next road trip?  
And we guarantee it won't complain about the music you play.

\*Standard on all Cascada models. **1** OnStar services require activation and an account with OnStar Europe Ltd, a GM company. All OnStar services and Wi-Fi services will cease to be available on 31 December 2020. No trial or paid subscriptions or services, including emergency response services, will be available after that date. Charges apply after applicable trial period. All services subject to mobile network coverage and availability. The OnStar subscription packages could be different from the services included in the free trial package. Check [vauxhall.co.uk/onstar](http://vauxhall.co.uk/onstar) for details of availability, coverage and charges. Terms and conditions apply. Vauxhall is not responsible for the provision of OnStar or Wi-Fi services. **2** Wi-Fi Hotspot services require an account with OnStar Europe Ltd, and nominated network operator. Wi-Fi trial has a time limit and capped data allowance. Charges apply thereafter. All services subject to mobile network coverage and availability. **3** OnStar acts as a link to existing emergency service providers. Not all vehicles may transmit all crash data.



VX\_ONS\_26483.tif



SOS

## YOU'RE SAFE

With OnStar you have emergency assistance at your fingertips, available 24 hours a day, 365 days a year.

### // Automatic Crash Response<sup>1,3</sup>:

in case of a crash and an airbag deploys, our advisors automatically connect to your car. If needed, they immediately brief the emergency services with key car information and can send them to your exact location.

### // 24-Hour Emergency Call Service<sup>1</sup>:

you or a passenger are not feeling well? Push the red SOS button and our advisors make sure to send help right away.

### // Roadside Assistance<sup>1,4</sup>:

if you have a flat tyre or a warning light in the dashboard goes on, just contact our advisors and they will send Roadside Assistance to your location, if required. This is even more valuable in areas with weaker mobile phone coverage or if your smartphone has run out of battery.

### // Stolen Vehicle Assistance<sup>1</sup>:

in case your car gets stolen, report it to the police and get a crime reference number. Once the car stops and is turned off, OnStar blocks the ignition so the car can't be restarted again and provides the police with the exact vehicle location to help retrieve your car safely.



## YOU'RE WELL CONNECTED

Nowadays, we're pretty used to having Wi-Fi on tap almost everywhere. So why not your car? And you can use the smartphone app to view the status of some functions, locate your car, and lock or unlock it if needs be.

### // Wi-Fi Hotspot<sup>1,2</sup>:

a fast and stable Internet connection enables you and your passengers to work, surf or just stream movies on up to 7 devices – thanks to the powerful OnStar boot lid antenna.

### // Remote Control<sup>1,5</sup>:

if you forgot to lock your car, you can use your smartphone to remotely lock or unlock it, even from afar, thanks to the My Vauxhall Smartphone App.

### // Car Locator<sup>1,5</sup>:

forgot where you've parked? Pinpoint your car's location on the app. If you are close and still do not see it, just blink the headlights or honk the horn to see where you've parked.



## YOU'RE LOOKED AFTER

Who wouldn't want a personal assistant?

At the touch of a button, you'll be connected to an assistant who's at your service – 24 hours a day, 7 days a week.

### // Hotel Booking<sup>1,6</sup>:

plans changed? Or too tired to keep driving? Let our advisors take care of your hotel booking en route, powered by Booking.com. Just press the blue Service Button.

### // Destination Download<sup>1,5</sup>:

no more address typing! Our advisors assist you in finding an alternative route, a restaurant or a petrol station. They will remotely download the address onto your in-built navigation system, too.

### // Parking Service<sup>1,7</sup>:

never search for a car park space again! Using Parkopedia.com, OnStar can find the nearest car park to your destination. That way, before you even get there, you'll already know the availability and parking fee. With destination download<sup>6</sup>, OnStar can send the information direct to your sat nav, making it even easier.

How's that for personal service?  
All without leaving your new Cascada.

<sup>4</sup> OnStar will direct a professional breakdown recovery team to your location. If your car is within the Vauxhall New Vehicle Roadside Assistance coverage period, OnStar will connect with the Vauxhall Roadside Assistance service, who will send help free of charge, subject to the Vauxhall Roadside Assistance terms and conditions. If your vehicle is outside the coverage of the Vauxhall New Vehicle Roadside Assistance service, the provider of the breakdown recovery service may apply charges for the services provided. <sup>5</sup> Some elements of Smartphone App, Destination Download and Vehicle Diagnostics may not be available for all cars/trim levels. An embedded Vauxhall navigation unit and map data are requirements for the Destination Download service. Check [vauxhall.co.uk/onstar](http://vauxhall.co.uk/onstar) for service limitations and charges. <sup>6</sup> An OnStar advisor can help you to book a hotel room using Booking.com, subject to the Booking.com user terms and privacy statement, which can be found on the Booking.com website, and the applicable terms and conditions for your hotel. OnStar assists you to make a booking and is not responsible for the services provided by Booking.com or the applicable hotel. E-mail address and credit card required. <sup>7</sup> Only available for car parks listed in Parkopedia.com. Availability applies only to the moment of contact with OnStar.

# HOW TO GET ONSTAR

OnStar is standard on all Cascada models.

1. We will send you an e-mail so you can activate your account – then just complete your registration and set your preferences.
2. Just activate OnStar when you take delivery of your new Vauxhall Cascada.
3. OnStar is ready to go!

After the 12-month free trial period<sup>1</sup>, you can decide to order a continuation of the OnStar services. This will be subject to a fee<sup>1</sup>.

You can purchase Wi-Fi Hotspot data packages separately from the nominated network provider by following the instructions on [vauxhall.co.uk/onstar](http://vauxhall.co.uk/onstar). Charges apply after the free trial period.



To ensure your privacy, you can turn OnStar off and on anytime\*.

Find out more at [vauxhall.co.uk/onstar](http://vauxhall.co.uk/onstar)

\*OnStar can only override the Privacy Button in an emergency or if your car is reported stolen.

<sup>1</sup>Free trial periods start with first registration or delivery from the Vauxhall retailer, whatever comes first, independent of customer activation. All OnStar services and Wi-Fi services will cease to be available on 31 December 2020. No trial or paid subscriptions or services, including emergency response services, will be available after that date.



VX\_CRO\_26708\_tif

# GET MORE FROM YOUR CAR WITH MY VAUXHALL

---

My Vauxhall is your one-stop shop for everything to do with your Cascada. Manage your OnStar account. Organise your car's next service. Get rewards and exclusive savings for you.

- // **Manage your Vauxhall** – take care of your Vauxhall online and book a service.
- // **Access your OnStar services** – get diagnostics reports, manage your subscription and more.
- // **Exclusive offers** – stay up to date on special offers, the latest news and current events.
- // **Retailer locator** – find your nearest Vauxhall retailer.

# HOW TO GET MY VAUXHALL

---

If you already use OnStar, you can access all the My Vauxhall services. Otherwise, simply register for My Vauxhall this way:

1. When you order your Cascada, your retailer will help you pre-register for My Vauxhall.
2. We'll send you an e-mail invitation to activate your My Vauxhall account and complete your registration.
3. My Vauxhall is ready to go – use it through any web browser, or the My Vauxhall app on your mobile device, available to download from the Google Play or Apple App Store.



VX\_MYVX\_27574.tif

# PRACTICAL FEATURES. MODERN SOLUTIONS

---

The Cascada is a four-seater that is available with a whole range of practical features that you wouldn't expect to find in a convertible.

## 1. **Electric rear seat easy entry system.**

This practical feature automatically moves the front seat forward so that passengers can access the rear seats. Available as part of the Power Seat Pack on Elite models.

## 2. **Electronic front seatbelt presenters.**

No detail is too small. That's why every Elite model is fitted with electronic front seatbelt presenters as standard. These motorised arms automatically move the seat belt forward to meet your hand, so you don't have to twist round in your seat.

## 3. **FlexFold automatic rear seat folding system.**

You'll find the 380 litre capacity boot more than useful. FlexFold transforms the Cascada into a two-seater that can take up to 750 litres of luggage, including items up to 1.8 metres long. Fold one or both of the 50/50 split rear seatbacks flat with the touch of a switch.

**Rear view camera.** This option makes reversing easy, even with the roof up. The centre display shows the area behind the car and you quickly appreciate just how easy it is to reverse the car safely.





3

# THE POWER TO IMPRESS

---





The Cascada performs as well as it looks thanks to a range of petrol and diesel engines. Whichever option you choose, you're guaranteed a dynamic experience everytime you get behind the wheel.

There's a choice of three Euro 6 petrol engines; a 1.4i Turbo (140PS) – available on both SE and Elite models – and two advanced direct injection units offered on the Elite; a 1.6i Turbo producing 170PS or the range-topping 200PS variant with 280Nm of torque. A 2.0CDTi common rail turbo diesel engine is also available on Elite models. Also Euro 6 compliant, the unit

produces 170PS and develops 400Nm of torque. The 1.4i Turbo (140PS), 1.6i (200PS) Direct Injection Turbo and 2.0CDTi (170PS) feature Start/Stop technology for improved fuel economy and emissions by switching off the engine when you stop at traffic lights, or in stationary traffic, then restarts it automatically once the clutch is depressed.

## ENGINES AND TRANSMISSIONS

	Performance (manufacturer's figures)		Fuel economy mpg (litres/100km) <sup>‡</sup>			CO <sub>2</sub> emissions <sup>‡</sup> (g/km)	VED (2017/18)*		Benefit-in-kind tax band <sup>†</sup> (2017/18 tax year)
	Maximum speed (mph)	Acceleration 0-60mph (secs)	Urban driving	Extra-urban driving	Combined figure		First year rate	Standard rate	
<b>Petrol</b>									
<b>1.4i Turbo (140PS) S/S</b>	129	10.2	33.2 (8.5)	52.3 (5.4)	43.5 (6.5)	151	£500	£140	29%
<b>1.6i Turbo (170PS) automatic</b>	136	9.2	28.0 (10.1)	45.6 (6.2)	37.2 (7.6)	176	£800	£140	34%
<b>1.6i Turbo (200PS) S/S</b>	146	8.2	31.0 (9.1)	51.4 (5.5)	40.9 (6.9)	158	£500	£140	30%
<b>Diesel</b>									
<b>2.0CDTi (170PS) S/S BlueInjection**</b>	135	9.6	47.1 (6.0)	67.3 (4.2)	57.6 (4.9)	129	£160	£140	27%

#Fuel consumption information is official government environmental data, tested in accordance with the relevant EU directive. Official EU-regulated test data is provided for comparison purposes and actual performance will depend on driving style, road conditions and other non-technical factors. \*Correct at time of publication. †Taxation information for guidance only. Please take professional advice on your own tax position. For more information please refer to the Cascada Price and Specification Guide for more information, available to download at [vauxhall.co.uk](http://vauxhall.co.uk) \*\*Please note: Vehicles with BlueInjection technology will need regular AdBlue® top-ups also between servicing requirements. An indicator integrated into the on-board computer will warn you when you need to top up. More information under [vauxhall.co.uk/blueinjection](http://vauxhall.co.uk/blueinjection). In accordance with regulations R (EC) No. 715/2007 and R (EC) No. 692/2008 (in the versions respectively applicable). S/S = Start/Stop.

# OPTIONS

The Cascada has the class, comfort and versatility to more than meet your needs. There's also an extensive range of feature options to help you make the Cascada your own. You can choose from ventilated Nappa Leather front seats to an acoustic roof option that enhances the Cascada's impressive all-weather credentials.

## **Ergonomic sports front seats.**

The Cascada's leather sports front seats adjust to suit your posture. Both front seats feature electric lumbar support adjustment plus cushion tilt and an extendable seat cushion. Better still, they have won the AGR\* seal of approval for helping to prevent the in-car back pain and tension that some people experience. Standard on Elite models, optional on SE as part of the Leather Seat Pack which also includes a heated steering wheel.

- 1. Premium Nappa Leather.** Elite models can be specified with Brandy Nappa Leather seat upholstery. This soft leather option also adds six-way electric adjustment for the front seats, together with an internal

ventilation system that helps reduce heat build up for an even more comfortable journey. Available as part of the Premium Leather Pack which also includes the electric operation of the rear seat easy entry system.

- 2. Wind deflectors.** For days when you'd prefer a little less wind in your hair, these purpose-designed windbreaks fit neatly behind the front seats and between the rear seat head restraints. Standard on Elite models, optional on SE.

**Triple-layered acoustic roof.** This option not only improves insulation against the elements but cuts the interior wind noise by up to a third.

\*AGR (The Campaign for Healthier Backs) is an independent centre of excellence for ergonomics, based in Germany.





2

VX\_CAS\_25974.tif

The image shows the interior of a car, focusing on the front seats and dashboard. The seats are upholstered in a light tan or beige leather with visible stitching. The dashboard is dark, possibly black or dark grey, with a textured surface. The car is parked on a paved surface, and the background is slightly blurred, suggesting an outdoor setting. The text is overlaid on a dark, diagonal band that runs across the center of the image.

# CASCADA. MORE TO ENJOY

The Cascada is available in two trim levels, SE and Elite. Each fitted with an impressive level of specification. Key features and materials include a hand-fitted Morrocana dashboard, leather-covered steering wheel, Digital radio, mobile phone system with Bluetooth® and rear parking distance sensors. As well as Vauxhall OnStar personal connectivity and service assistant\* with a 4G Wi-Fi Hotspot to keep you well connected. On the Elite model, additional benefits include electronic front seatbelt presenters, dual-zone electronic climate control and a leather interior. Plus a range of optional extras, including premium Nappa Leather, satellite navigation and a front camera system to keep you informed and on the move.



# SE

## Standard features include:

- // Dual-layered fabric roof with remote control operation
- // Vauxhall OnStar
- // Electronic Stability Programme-Plus
- // Four airbags and active rollover protection system
- // 18-inch alloy wheels
- // Air conditioning
- // CD/MP3 CD player with stereo and digital radio
- // Aux-in socket and USB connection with iPod control
- // Mobile phone system with Bluetooth®
- // Three-spoke leather-covered steering wheel
- // Cruise control
- // Steering wheel mounted audio controls
- // Sports front seats
- // Electrically operated front/rear windows
- // Rear parking distance sensors
- // LED rear lights
- // Remote control alarm system with central deadlocking
- // FlexFold rear seats with remote electric release
- // Multi-function trip computer
- // Electric parking brake

## Engine availability Insurance groups (ABI)

1.4i Turbo (140PS) S/S	20E
------------------------	-----

S/S = Start/Stop.



VX\_CAS\_25957.tif



Model illustrated features Mineral Black two-coat metallic paint, optional at extra cost.

VX\_CAS\_25882.tif

# ELITE

## Features over and above SE models:

- // 20-inch 5-twinspoke bi-colour alloy wheels
- // Dual-zone electronic climate control
- // Perforated solar heat-reflective leather seat facings
- // Heated front seats
- // Ergonomic sports front seats with extendable seat cushions
- // Front seats with tilt and four-way electrical lumbar adjustment
- // Three-spoke perforated leather-covered flat bottomed heated steering wheel
- // Rain-sensitive windscreen wipers
- // Automatic lighting control with tunnel detection and digital high beam assist
- // Electro-chromatic anti-dazzle rear-view mirror
- // Front fog lights
- // Electronic front seatbelt presenters
- // Windbreak
- // Ambient lighting in doors
- // Driver's and front passenger's sun visors with illuminated vanity mirrors

## Engine availability Insurance groups (ABI)

1.4i Turbo (140PS) S/S	21E
1.6i Turbo (170PS) Direct Injection automatic	24E
1.6i Turbo (200PS) Direct Injection S/S	26E
2.0CDTi (170PS) S/S	25E

S/S = Start/Stop.



VX\_CAS\_25956.tif





Model illustrated features Summit White solid paint.

[VX\\_CAS\\_23543.psd](#)

# WHEELS AND TYRES

The perfect finishing touch. Both models feature an imposing wheel design as standard while an optional design is also available just to be different.

## STANDARD

1. **SE 18-inch 5-twinblade alloy wheels** with 235/50 R 18 tyres.
2. **ELITE 20-inch 5-twinblade alloy wheels** with 245/40 R 20 tyres.




## OPTIONAL\*

3. **SE/ELITE 19-inch multi-spoke bi-colour alloy wheels** with 235/45 R 19 tyres.

\*Optional at extra cost on SE models. No-cost option on Elite models.

### Please note:

A 17-inch space-saver steel spare wheel is available at extra cost in lieu of the emergency tyre inflation kit (excludes 1.6i (200PS) Direct Injection Turbo Elite models).

TYRE RATING				
Tyre size	Fuel efficiency group	Wet grip performance	External noise Measured (dB)	Group
235/50 R 18	E	B	71	
235/45 R 19	E	B	68	
245/40 R 20	E	B	71	

Tyre rating according to EU Regulation 1222/2009.

VX\_CAS\_RQH\_25975.tif

VX\_CAS\_RTH\_25976.tif

VX\_CAS\_RVB\_25977.tif



# ACCESSORIES

Outstanding style, impressive quality and sheer elegance are all Cascada hallmarks, but that doesn't mean it can't handle those everyday moments.

Genuine Vauxhall Accessories are designed to cope with every eventuality. Please check with your retailer for more information, or visit [vauxhall.co.uk/accessories](http://vauxhall.co.uk/accessories)



1. **Towing bar.** With no solid roof to provide a firm base for a roof carrier, transporting cycles, canoes or surf boards demands a towing hitch. For the Cascada we have developed one that can be neatly and easily removed when not in use.

2. **Child seats.** The KID child seat (15-36kg) is fixed with the standard lap and diagonal seatbelt.

3. **iPad cradle.** This purpose-designed cradle attaches to the FlexConnect universal carrier system and provides secure and convenient in-vehicle location of an iPad 2, 3 or 4. You can also revolve it 360° and tilt it by 15° for perfect on-the-move viewing. A separate cradle is also available for iPad mini.

4. **Indoor car cover.** Keep your Cascada looking immaculate and free from dust and dirt with an indoor car cover.

5. **Luggage net.** Keep your luggage secure with this expanding net that's easily fixed to the anchor points in the boot floor.

6. **Floor mats.** There's a full range of tailored floor mats providing that all-important extra protection, complete with Cascada branding. Stylish Black velours, with Black or Brandy detailing.

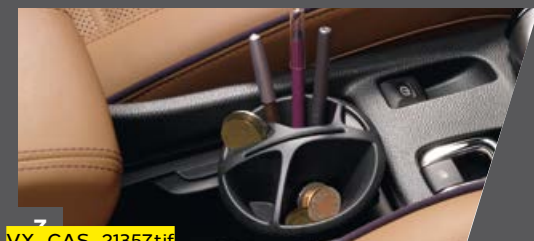
**Cupholder inserts.** Make-up can be easily and conveniently stored in the make-up insert **7**. Pocket tissues can be stored in comfortable reach with the purpose-designed tissue insert **8**. Writing utensils and small note pad will be close to hand with the note pad insert **9**.



VX\_CAS\_23060.tif



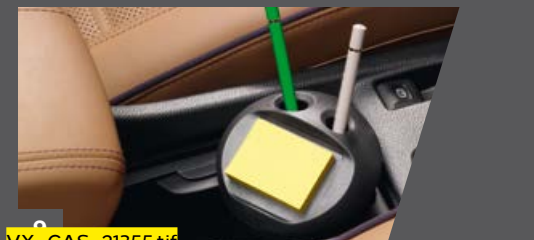
VX\_CAS\_20411.tif



VX\_CAS\_21357.tif



VX\_CAS\_21356.tif



VX\_CAS\_21355.tif



4

VX\_CAS\_20443.tif

# EXTERIOR COLOURS

Choose from two attractive roof colours and a range of carefully selected exterior colours and finishes for a perfect combination.

## ROOF



VX\_CAS\_23544.tif

Black\*



VX\_CAS\_23545.tif

Malbec\*\*

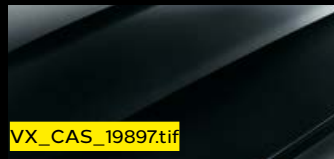
## SOLID†



VX\_CAS\_19896.tif

Summit White

## TWO-COAT METALLIC†



VX\_CAS\_19897.tif

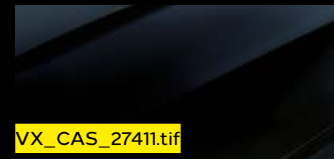
Mineral Black



VX\_CAS\_25991.tif

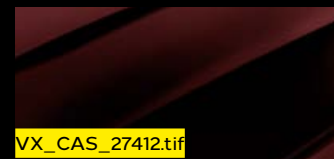
Cosmic Grey

## TWO-COAT PREMIUM†



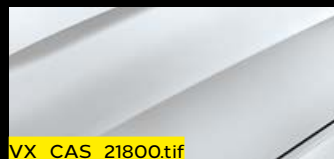
VX\_CAS\_27411.tif

Darkmoon Blue



VX\_CAS\_27412.tif

Rioja Red



VX\_CAS\_21800.tif

Sovereign Silver

\*Standard dual-layered roof. Triple-layer acoustic variant also available as an extra-cost option. \*\*Optional at extra cost. Includes triple-layer acoustic roof feature. Not available on Darkmoon Blue or Cosmic Grey exterior colours. Other restrictions apply. Please refer to the latest Cascada Price and Specification Guide for availability. †Please refer to the latest Cascada Price and Specification Guide available from [vauxhall.co.uk](http://vauxhall.co.uk) for details of colour availability by model and price. Due to the limitations of the printing process, the colours reproduced may vary slightly from the actual paint or roof colour. As a result, they should be used as a guide only. Your Vauxhall retailer has a comprehensive display of our paint samples.



VX\_CAS\_RVB\_27577.tif

# INTERIOR TRIMS

---

The Cascada interior offers a selection of exclusively designed fabrics and trims featuring Pixelstorm cloth, perforated Siena Leather and the premium Nappa Leather.

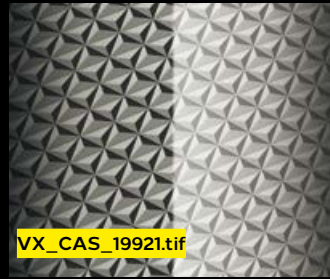
Due to the limitations of the printing process, the trims reproduced may vary slightly from the actual trim material. As a result, they should be used as a guide only.







#### JET BLACK PIXELSTORM CLOTH

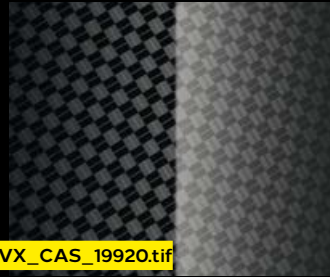


Trias décor mouldings.



Sports front seats standard on SE models.

#### JET BLACK SIENA LEATHER

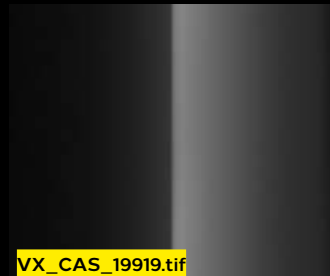


Black Magic décor mouldings.

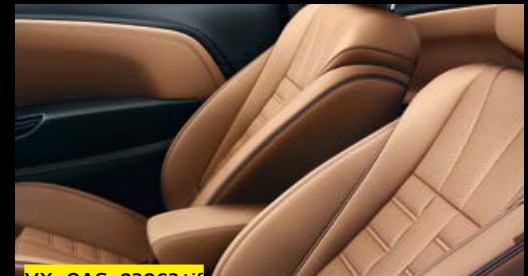


Ergonomic sports front seats standard on Elite models, optional on SE, as part of the Leather Pack.

#### PREMIUM BRANDY NAPPA LEATHER



Piano Black décor mouldings.



Optional on Elite models, as part of the Premium Leather Pack.





TIMELESS STYLE.  
LASTING IMPRESSION

---

# Trust Vauxhall

## Company Car Driver 3 Day Test Drive

Our free\* 3 Day Test Drive programme is open to all Company Car Drivers which allows you to choose any model in the current Vauxhall line-up (excluding Cascada, Insignia GSi, all VXR models and Commercial Vehicles), with insurance cover provided, to give you a meaningful length of time to make an informed decision about your next company car.

To book your free\* test drive just log on to [vauxhall3dtd.co.uk](http://vauxhall3dtd.co.uk) or call **0330 587 8221\*\***



When you have finished with this brochure please recycle it

\*The free 3 Day Test Drive programme is open to Company Car Drivers and Fleet Decision Makers. Available for UK Mainland only. Terms and Conditions apply. Full terms and conditions can be found at [vauxhallfleet.co.uk/testdrive/index/terms](http://vauxhallfleet.co.uk/testdrive/index/terms).  
\*\*Telephone lines open Monday-Friday 9.00am to 5.00pm excluding Bank Holidays. Calls may be recorded or monitored for quality and/or training purposes.

Privacy Policy – For full details please visit: [vauxhall.co.uk/privacy](http://vauxhall.co.uk/privacy)

OnStar privacy details are available at [vauxhall.co.uk/onstar](http://vauxhall.co.uk/onstar)

## Fleet Customer Services

Our dedicated support services for fleet decision makers include factory demonstrators and information on whole life costs, company car taxation and finance.

For further information please call **0330 587 8222**.

## For more information...

For a brochure on any Vauxhall model (up to a maximum of three per caller) or location of your nearest Vauxhall retailer, please call **0345 600 1500**.

Alternatively, details can be found on our website at [vauxhall.co.uk](http://vauxhall.co.uk)

Join us online:



Scan this QR code with your smartphone for more information. Don't forget to download a QR reader from your app store first.

Some feature descriptions in this brochure may refer to, and some illustrations may show, optional equipment not included in the standard delivery. The information contained in this brochure was accurate at the time of going to print. We reserve the right to make changes in design and equipment. The colours printed in the brochure only approximate actual colours. Illustrated optional equipment is available at extra charge. Availability, technical features and equipment provided on our vehicles can vary by model. For precise information on the equipment provided on our vehicles, please contact your local Vauxhall Retailer. As part of Vauxhall's policy of environmental care, this brochure is printed on paper manufactured using Elemental Chlorine Free pulps from specially farmed, sustainable timber resources.

# VAUXHALL

[vauxhall.co.uk/cascada](http://vauxhall.co.uk/cascada)  
v2 ©2018 Vauxhall Motors Limited  
Published May 2018 Vauxhall Motors Limited